

## EASYPELL

EFFICIENT AND RELIABLE HEATING



HEATING/  
COOLING



DOMESTIC  
HOT WATER



EQUIPMENT

PRODUCT BROCHURE  
AIR-TO-WATER HEAT PUMP





# THERMAL MANAGEMENT FOR THE ENTIRE HOUSE

## WATER HEATING

From the bathroom to the kitchen - the heat pump provides the entire hot water preparation in the household. Combine the system with a hot water tank, or a buffer with corrugated stainless-steel pipe or freshwater module.

## SUITABLE FOR ALL HEAT EMISSION SYSTEMS

Regardless of whether it is a radiator, underfloor or wall heating - the heat pump harmonises with all systems up to 70 °C.

## THERMAL MANAGEMENT

The system allows an independent thermostat control. It is also possible to use the outside temperature sensor or an external heating controller.

## BUFFER LOGIC

The optimal heat pump combination: heating, cooling and domestic hot water in one. The energy storage can also be regulated by means of a controller.

## FREE APP

All settings can be adapted via controller or app. This way, you always have an overview of the actual performance and historical consumption data.





## OUTSIDE TEMPERATURE CONTROL

The weather control ensures that the heat pump regulates the heating temperature depending on the outside temperature. Thus, the perceived room temperature always remains constant.

## SMART PV / GRID READY

Combine it with a PV system for utilizing and storing surplus energy through dynamic heating management. Integrated SMART GRID function enables cost-effective electricity access.

## CASCADE AND HYBRID FUNCTION

At any time extendable with other devices or heating sources in one holistic system.

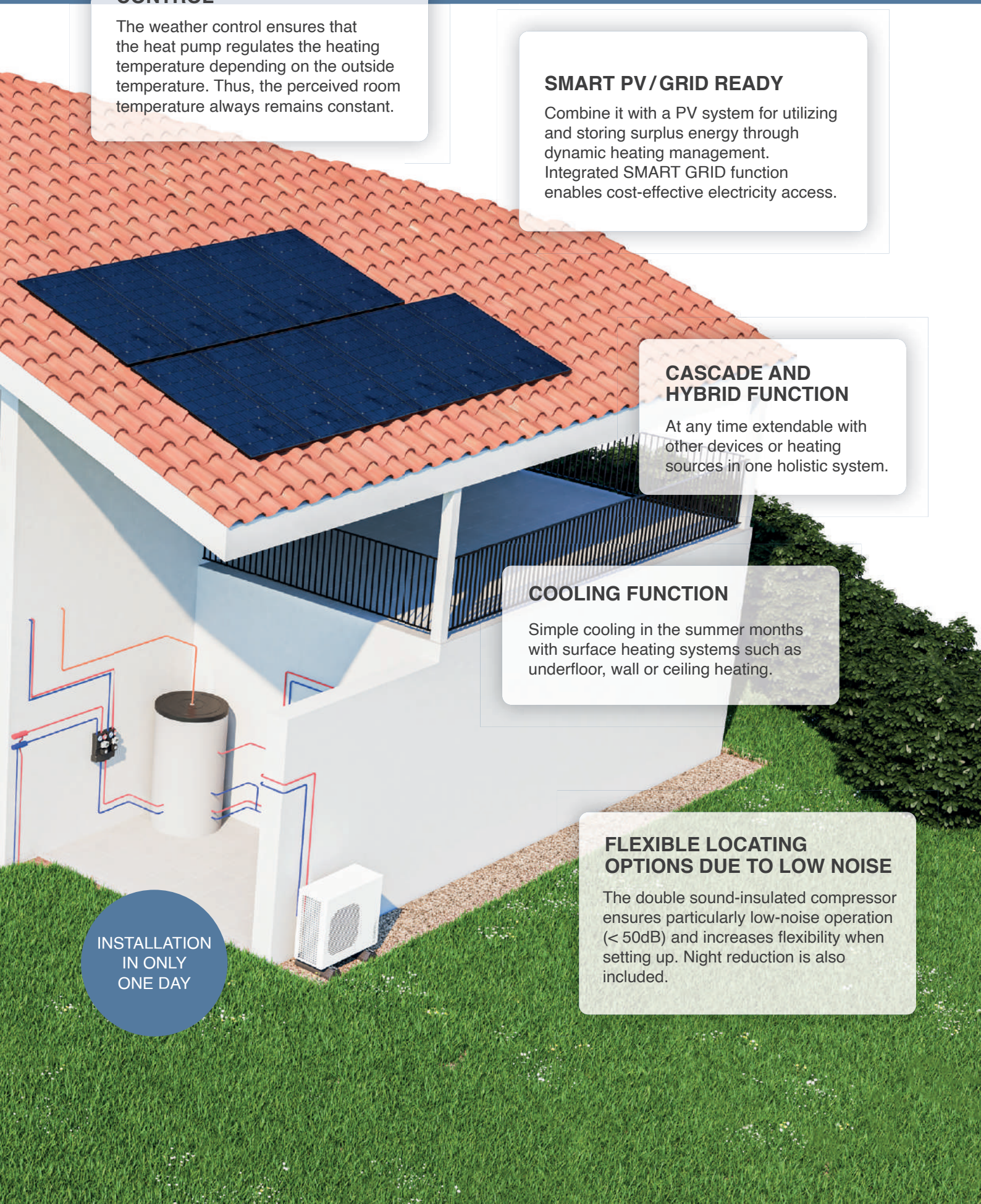
## COOLING FUNCTION

Simple cooling in the summer months with surface heating systems such as underfloor, wall or ceiling heating.

## FLEXIBLE LOCATING OPTIONS DUE TO LOW NOISE

The double sound-insulated compressor ensures particularly low-noise operation (< 50dB) and increases flexibility when setting up. Night reduction is also included.

INSTALLATION  
IN ONLY  
ONE DAY







## TECHNOLOGY IN DETAIL

FULL DC INVERTER  
TECHNOLOGY  
advanced modulation control  
for electricity saving

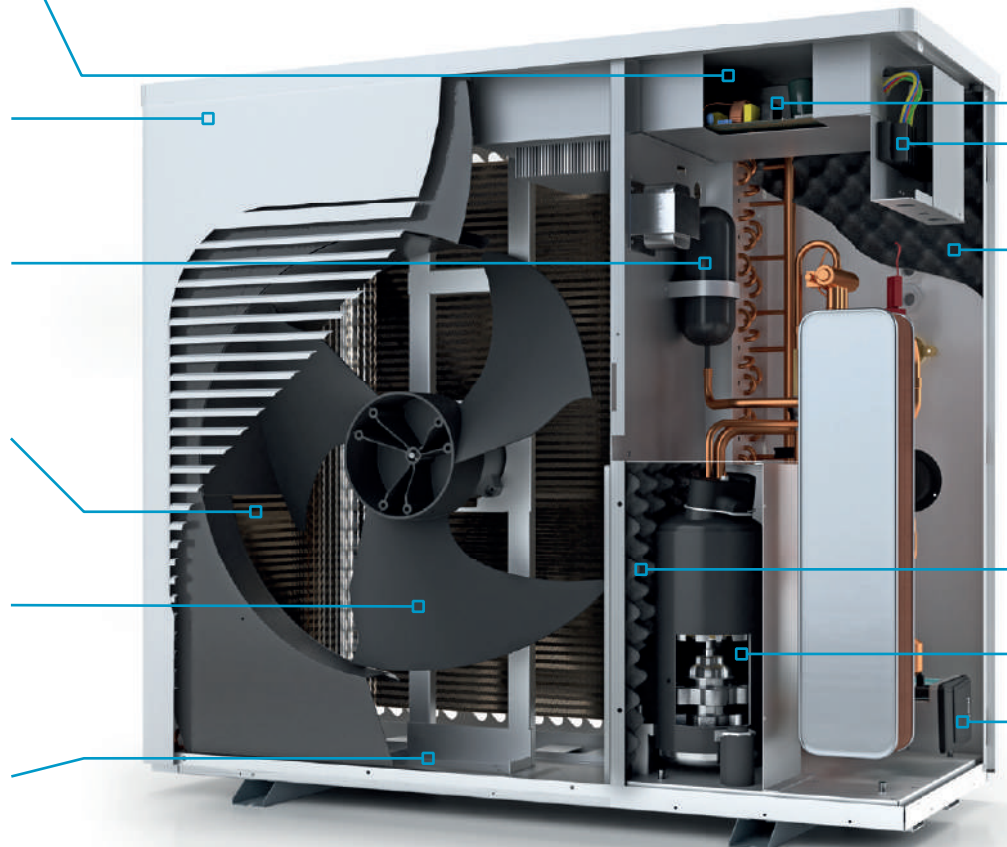
ELEGANT AND  
EXCLUSIVE DESIGN  
slim construction

ENVIRONMENTAL  
FRIENDLY REFRIGERANT  
R290 with a GWP of 3

LARGELY DIMENSIONED  
AIR HEAT EXCHANGER

OPTIMIZED AIR FLOW  
noise minimization through  
smart fan and conduct design

ICE-FREE DEFROST  
because of a thermal  
component



### AFFORDABLE & ECO-FRIENDLY

Using ambient air as the primary heat source is a sustainable solution that is both cost-effective and climate-friendly.



### EXCEPTIONALLY QUIET IN OPERATION

The use of high-quality soundproofing materials and advanced sound absorption techniques effectively minimize noise and vibration.



### CLIMATE-FRIENDLY REFRIGERANT R290

The refrigerant R290 is an environmentally friendly and future-oriented solution with outstanding performance value also at higher temperature.

OUTDOOR TEMPERATURE REGULATED  
HEATING CIRCUIT CONTROL  
for optimal room climate

COMBINABLE WITH BUFFER  
AND DHW TANK  
for heating and cooling

SPECIAL SOUNDPROOF COTTON  
stronger sound absorption, insulation, and  
reduction than standard material

DOUBLE-SOUNDPROOFED  
COMPRESSOR  
extremely silent during operation

MODULATION AND  
POWER ADJUSTMENT  
for higher efficiency and a longer lifetime

HIGH-EFFICIENCY PUMP INCLUDED  
speed-regulated with energy flow measurement



HEATING / COOLING / DHW



FREE APP WITH FULL  
CONTROL FROM EVERYWHERE



SMART PV/GRID READY



## HIGH EFFICIENT PERFORMANCE

The heat pump offers flexibility in output control, allowing adjustments through modulation and cascading. It can attain high flow temperatures of up to 70 °C.



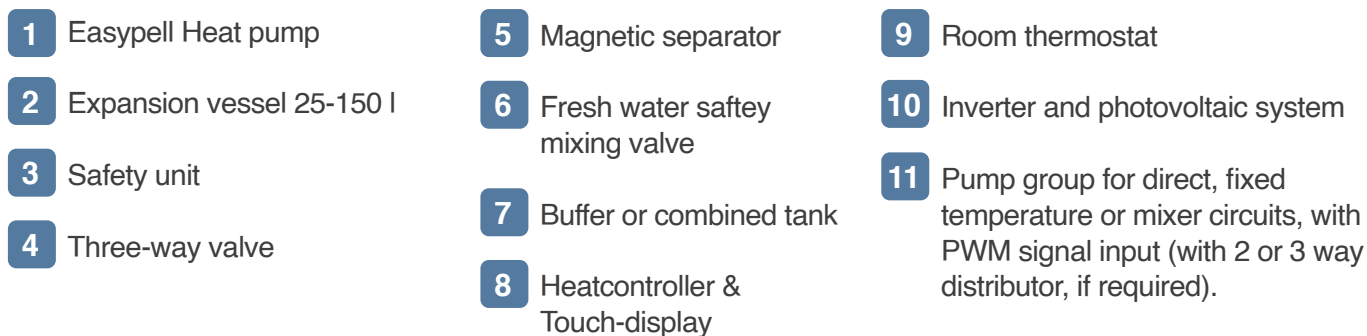
## SUPPORT & SERVICE WORLDWIDE

Our worldwide partner network guarantees reliable heat: Our customer service is experienced, efficient and always quickly on site.



## LONG WARRANTY PERIOD

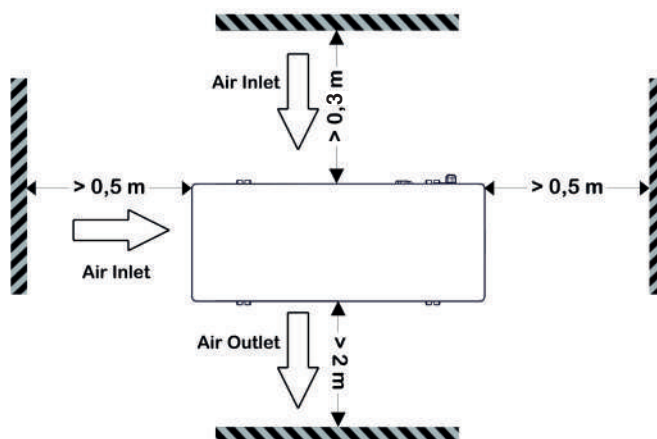
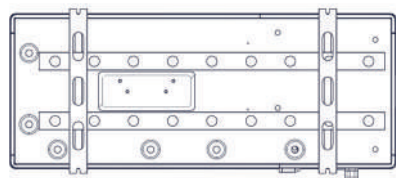
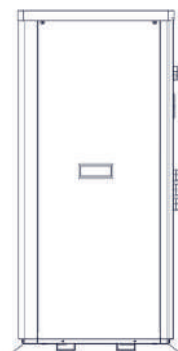
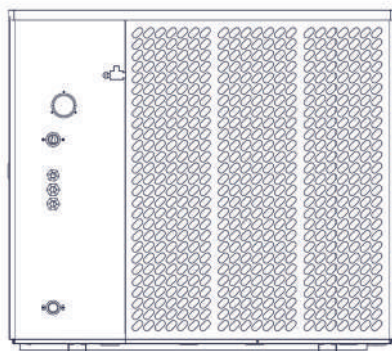
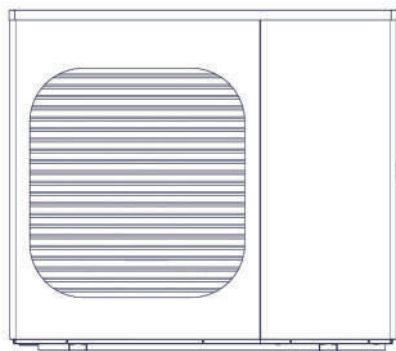
Quality and durability are core values of our products. That's also what our 3-year overall and 5 year compressor guarantee stands for.



With the smart and flexible online control, the energy management gives you full flexibility: Adjust the settings at any time via the controller or via the app and control your heating from anywhere. No matter where, you always have access to current and historical consumption data.



# HYDRAULICS IN PRACTICE



Product name		EASYPELL 06	EASYPELL 09	EASYPELL 12	EASYPELL 12T	EASYPELL 17T
Product model		EPA06	EPA09	EPA12	EPA12T	EPA17T
Heating rated power	kW A7 / W35	3,3-8,3	4,5-11,4	5,9-14,8		8,8-22,0
	kW A-2 / W35	3,0-7,3	3,7-9,3	4,9-12,0		7,3-17,9
	kW A-7 / W35	2,7-6,4	3,4-8,2	4,5-10,6		6,7-15,8
	kW A7 / W55	3,7-7,4	5,2-10,2	6,6-13,2		8,1-20,4
	kW A-2 / W55	2,8-6,7	3,5-8,6	4,5-11,2		6,8-16,6
	kW A-7 / W55	2,5-5,9	3,1-7,6	4,1-9,8		6,2-14,6
COP Range	A7 / W35			4,2-5,3		
COP Range	A7 / W55			3,1-3,8		
COP mixed (EN14.011-2)	W35 / W55	5,1 / 3,2	4,9 / 3,2	5,0 / 3,0		4,6 / 3,2
SCOP middle climate (EN14.825)	W35 / W55	4,7 / 3,5	4,5 / 3,5	4,6 / 3,4		4,7 / 3,6
Cooling rated power	kW A35 / W18	2,6-6,1	3,6-8,6	4,7-11,3		6,8-16,1
EER	A35 / W18			3,2-3,6		
ErP Level	35°C / 55°C			A+++ / A++		
ηs heating	35°C / 55°C	183 / 136	181 / 137	183 / 132		185 / 139
Refrigerant		R290				
Power supply		230V/1Ph/50Hz			400V/3Ph/50Hz	
Electrical input power	kW	0,8-2,7	0,8-3,5	1,0-4,5		1,5-6,8
Maximum power input	kW	3,1	4,1	5,2		7,6
Maximum current	Amp	14,2	18,8	23,8	9,8	14,3
Recom. circuit breaker	Amp (Typ C)	16	20	25	12	16
Diameter of pipe / Connector	mm / inch	DN25 / F1"				
Max pump water head	m		9			12
Unit max. pressure drop	kPa	30	35	40		45
Water flow	m³/h	1,4	2,0	2,6		3,8
Sound pressure at 3m (A7/W35)	dB(A)	34	33	35	34	35
Sound power level (A7/W35)	dB(A)	58	57	59		60
Net Weight	kg	112	120	138		170
Net Dimension (L/W/H)	mm	1085x460x825	1085x460x965	1085x480x1065		1085x480x1378
Flow pipe height	mm	600	600	910		1080
Return pipe height	mm	130	130	105		570
Operating ambient temp.range	°C	-25 to 43				
DHW temperature	°C	20 to 65				
Heating temperature	°C	20 to 70				
Cooling temperature	°C	7 to 35				





Sole UK Distributors  
Organic Energy UK Ltd  
B3, Greenwood Court Ind. Est.  
Shrewsbury SY1 3TB UK  
Tel - 01938 530 070  
Email - [info@organicenergy.co.uk](mailto:info@organicenergy.co.uk)  
Web - [www.organicenergyheatpumps.co.uk](http://www.organicenergyheatpumps.co.uk)

